



LION BRAND® WOOL-EASE® THICK & QUICK®
Knit Bobbled Tree Throw

Pattern: 50258



LION BRAND® WOOL-EASE® THICK & QUICK®

Knit Bobbled Tree Throw

Pattern: 50258

SKILL LEVEL: Intermediate

SIZE

57" x 43" [145 x 109 cm], excluding fringe

MATERIALS

- LION BRAND Wool-Ease Thick & Quick
14 balls #099 Fisherman
or color of your choice
- LION BRAND size 11 [8 mm] knitting needles OR SIZE TO OBTAIN GAUGE
- LION BRAND size N-13 [9 mm] crochet hook
- LION BRAND cable needle

GAUGE

9 sts + 13 rows = 4" [10 cm] in Stockinette st (k on RS, p on WS).
BE SURE TO CHECK YOUR GAUGE.

STITCH EXPLANATIONS

RT (right twist) K2tog and leave on left needle; with right needle, go between the 2 sts and k the first st again. Drop both sts from left needle.

2/3RC (2 over 3 right cross) Slip 3 sts to cable needle and hold in back, k 2, k 3 from cable needle.

3/3RC (3 over 3 right cross) Slip 3 sts to cable needle and hold in back, k 3, k 3 from cable needle.

4/4RC (4 over 4 right cross) Slip 4 sts to cable needle and hold in back, k 4, k 4 from cable needle.

MB (make bobble) (K 1, p 1, k 1, p 1, k 1) in same st, pass 2nd, 3rd, 4th, and 5th sts on right needle over first.

NOTES

Throw is made of 5 panels, crocheted together. Begin each panel with new skein; remaining yarn is used for finishing. Begin at lower left (Panel 1).

PANEL 1

Cast on 28 sts.

Rows 1, 3, 5, and 7 (WS) (K 1, p 2) 3 times, k 1, p 8, (k 1, p 2) 3 times, k 1.

Rows 2, 4, and 6 (RS) (P 1, RT) 3 times, p 1, k 8, (p 1, RT) 3 times, p 1.

Row 8 (P 1, RT) 3 times, p 1, 4/4RC, (p 1, RT) 3 times, p 1.

Rows 9-160 Repeat Rows 1-8 for 19 times.

© 1998-2005 [Lion Brand Yarn Company](http://www.lionbrand.com), all rights reserved
34 West 15th Street, New York, New York 10011
Call TOLL-FREE 1-800-258-YARN

Rows 161-168 Repeat Rows 1-2 for 4 times.
Bind off on WS, leaving remaining yarn attached.

PANEL 2

Cast on 21 sts.

Row 1 and all WS rows K 1, p 2, k 2, p 2, k 1, p 5, k 1, p 2, k 2, p 2, k 1.

Rows 2 and 4 (RS) P 1, k 6, p 1, k 5, p 1, k 6, p 1.

Row 6 P 1, k 6, p 1, 2/3RC, p 1, k 6, p 1.

Row 8 P 1, k 6, p 1, k 5, p 1, k 6, p 1.

Row 10 P 1, k 6, p 1, k 2, MB, k 2, p 1, k 6, p 1.

Rows 11-160 Repeat Rows 5-10 for 25 times.

Rows 161-162 Repeat Rows 5-6.

Rows 163-168 Repeat Rows 1-2.

Bind off on WS, leaving remaining yarn attached.

PANEL 3

Cast on 33 sts.

Row 1 (WS) K 1, p 31, k 1.

Row 2 (RS) P 1, RT, k 3, RT, k 17 tbl, RT, k 3, RT, p 1.

Rows 3-26 Repeat Rows 1-2 for 12 times.

Row 27 Repeat Row 1.

Row 28 P 1, RT, k 3, RT, k 5 tbl, p 1, k 5, p 1, k 5 tbl, RT, k 3, RT, p 1.

Row 29 K 1, p 12, k 1, p 5, k 1, p 12, k 1.

Row 30 P 1, RT, k 3, RT, k 4 tbl, p 2, k 5, p 2, k 4 tbl, RT, k 3, RT, p 1.

Row 31 K 1, p 11, k 2, p 5, k 2, p 11, k 1.

Row 32 P 1, RT, k 3, RT, k 3 tbl, p 3, k 5, p 3, k 3 tbl, RT, k 3, RT, p 1.

Row 33 K 1, p 10, k 3, p 5, k 3, p 10, k 1.

Row 34 P 1, RT, k 3, RT, k 2 tbl, p 4, 2/3RC, p 4, k 2 tbl, RT, k 3, RT, p 1.

Row 35 K 1, p 9, k 4, p 5, k 4, p 9, k 1.

Row 36 P 1, RT, k 3, RT, k 1 tbl, p 5, k 5, p 5, k 1 tbl, RT, k 3, RT, p 1.

Row 37 K 1, p 8, k 5, p 5, k 5, p 8, k 1.

Row 38 P 1, RT, k 3, RT, p 6, k 5, p 6, RT, k 3, RT, p 1.

Row 39 K 1, p 7, k 6, p 5, k 6, p 7, k 1.

Row 40 P 1, RT, k 3, RT, p 6, 2/3RC, p 6, RT, k 3, RT, p 1.

Rows 41, 43, and 45 Repeat Row 39.

Rows 42, 44, and 46 Repeat Row 38.

Row 47 K 1, p 7, k 5, (k 1, p 1, k 1) in next st, p 5, (k 1, p 1, k 1) in next st, k 5, p 7, k 1 – 37 sts.

Row 48 P 1, RT, k 3, RT, p 9, k 1, p 1, k 1, p 9, RT, k 3, RT, p 1.

Row 49 K 1, p 7, k 4, (k 1, p 1, k 1) in next st, p3tog, [(k 1, p 1, k 1) in next st, p 1] twice, (k 1, p 1, k 1) in next st, p3tog, (k 1, p 1, k 1) in next st, k 4, p 7, k 1 – 43 sts.

Row 50 P 1, RT, k 3, RT, p 27, RT, k 3, RT, p 1.

Row 51 K 1, p 7, k 3, [(k 1, p 1, k 1) in next st, p3tog] 5 times, (k 1, p 1, k 1) in next st, k 3, p 7, k 1 – 45 sts.

© 1998-2005 Lion Brand Yarn Company, all rights reserved
34 West 15th Street, New York, New York 10011
Call TOLL-FREE 1-800-258-YARN

Row 52 P 1, RT, k 3, RT, p 29, RT, k 3, RT, p 1.

Row 53 K 1, p 7, k 2, [(k 1, p 1, k 1) in next st, p3tog] 6 times, (k 1, p 1, k 1) in next st, k 2, p 7, k 1 – 47 sts.

Row 54 P 1, RT, k 3, RT, p 31, RT, k 3, RT, p 1.

Row 55 K 1, p 7, k 2, [p3tog, (k 1, p 1, k 1) in next st] 6 times, p3tog, k 2, p 7, k 1 – 45 sts.

Row 56 P 1, RT, k 3, RT, p 29, RT, k 3, RT, p 1.

Rows 57-60 Repeat Rows 53-56.

Row 61 K 1, p 7, k 3, [p3tog, (k 1, p 1, k 1) in next st] 5 times, p3tog, k 3, p 7, k 1 – 43 sts.

Row 62 P 1, RT, k 3, RT, p 27, RT, k 3, RT, p 1.

Row 63 K 1, p 7, k 4, [p3tog, (k 1, p 1, k 1) in next st] 4 times, p3tog, k 4, p 7, k 1 – 41 sts.

Row 64 P 1, RT, k 3, RT, p 25, RT, k 3, RT, p 1.

Row 65 K 1, p 7, k 5, [p3tog, (k 1, p 1, k 1) in next st] 3 times, p3tog, k 5, p 7, k 1 – 39 sts.

Row 66 P 1, RT, k 3, RT, k 1 tbl, p 21, k 1 tbl, RT, k 3, RT, p 1.

Row 67 K 1, p 8, k 5, [p3tog, k 1] 2 times, p3tog, k 5, p 8, k 1 – 33 sts.

Row 68 P 1, RT, k 3, RT, k 2 tbl, p 13, k 2 tbl, RT, k 3, RT, p 1.

Row 69 K 1, p 9, k 13, p 9, k 1.

Row 70 P 1, RT, k 3, RT, k 3 tbl, p 11, k 3 tbl, RT, k 3, RT, p 1.

Row 71 K 1, p 10, k 11, p 10, k 1.

Row 72 P 1, RT, k 3, RT, k 4 tbl, p 9, k 4 tbl, RT, k 3, RT, p 1.

Rows 73-102 Repeat Rows 1-2 for 15 times.

Row 103 K 1, p 11, k 9, p 11, k 1.

Row 104 P 1, RT, k 3, RT, k 4 tbl, p 9, k 4 tbl, RT, k 3, RT, p 1.

Row 105 K 1, p 11, k 9, p 11, k 1.

Row 106 P 1, RT, k 3, RT, k 3 tbl, p 11, k 3 tbl, RT, k 3, RT, p 1.

Row 107 K 1, p 9, k 4, [(k 1, p 1, k 1) in next st, p 1] twice, (k 1, p 1, k 1) in next st, k 4, p 9, k 1 – 39 sts.

Row 108 P 1, RT, k 3, RT, k 2 tbl, p 19, k 2 tbl, RT, k 3, RT, p 1.

Row 109 K 1, p 8, k 4, [(k 1, p 1, k 1) in next st, p3tog] 3 times, (k 1, p 1, k 1) in next st, k 4, p 8, k 1 – 41 sts.

Row 110 P 1, RT, k 3, RT, k 1 tbl, p 23, k 1 tbl, RT, k 3, RT, p 1.

Row 111 K 1, p 10, k 1, [(k 1, p 1, k 1) in next st, p3tog] 4 times, (k 1, p 1, k 1) in next st, k 1, p 10, k 1 – 43 sts.

Row 112 P 1, RT, k 3, RT, p 27, RT, k 3, RT, p 1.

Rows 113-124 Repeat Rows 51-62.

Row 125 K 1, p 7, k 4, p3tog, (k 1, p 1, k 1) in next st, (p3tog, p 1) 2 times, p3tog, (k 1, p 1, k 1) in next st, p3tog, k 4, p 7, k 1 – 37 sts.

Row 126 P 1, RT, k 3, RT, p 8, k 5, p 8, RT, k 3, RT, p 1.

Row 127 K 1, p 7, k 5, p3tog, p 5, p3tog, k 5, p 7, k 1 – 33 sts.

Row 128 P 1, RT, k 3, RT, p 6, k 5, p 6, RT, k 3, RT, p 1.

Row 129 K 1, p 7, k 6, p 5, k 6, p 7, k 1.

Row 130 P 1, RT, k 3, RT, p 6, 2/3RC, p 6, RT, k 3, RT, p 1.

Row 131 Repeat Row 129.

Row 132 Repeat Row 128.

Row 133 K 1, p 8, k 5, p 5, k 5, p 8, k 1.

Row 134 P 1, RT, k 3, RT, k 1 tbl, p 5, k 5, p 5, k 1 tbl, RT, k 3, RT, p 1.

Row 135 K 1, p 9, k 4, p 5, k 4, p 9, k 1.

Row 136 P 1, RT, k 3, RT, k 2 tbl, p 4, 2/3RC, p 4, k 2 tbl, RT, k 3, RT, p 1.

Row 137 K 1, p 10, k 3, p 5, k 3, p 10, k 1.

Row 138 P 1, RT, k 3, RT, k 3 tbl, p 3, k 5, p 3, k 3 tbl, RT, k 3, RT, p 1.

Row 139 K 1, p 11, k 2, p 5, k 2, p 11, k 1.

Row 140 P 1, RT, k 3, RT, k 4 tbl, p 2, k 5, p 2, k 4 tbl, RT, k 3, RT, p 1.

Row 141 K 1, p 12, k 1, p 5, k 1, p 12, k 1.

Row 142 P 1, RT, k 3, RT, k 5 tbl, p 1, k 5, p 1, k 5 tbl, RT, k 3, RT, p 1.

Rows 143-168 Repeat Rows 1-2 for 13 times.

Bind off on WS.

PANEL 4

Cast on 26 sts.

Rows 1, 3, and 5 (WS) K 1, p 6, k 3, p 6, k 3, p 6, k 1.

Rows 2 and 4 (RS) P 1, k 24, p 1.

Row 6 P 1, (3/3RC, k 3) 2 times, 3/3RC, p 1.

Rows 7-162 Repeat Rows 1-6 for 26 times.

Rows 163-168 Repeat Rows 1-2 for 3 times.

Bind off on WS, leaving remaining yarn attached.

PANEL 5

Cast on 25 sts.

Rows 1 and 3 (WS) (K 1, p 2) 3 times, k 3, p 1 tbl, k 3, (p 2, k 1) 3 times.

Rows 2 and 4 (RS) (P 1, RT) 3 times, p 3, k 1 tbl, p 3, (RT, p 1) 3 times.

Row 5 (K 1, p 2) 3 times, k 2, (k 1, p 1, k 1) in next st, p 1 tbl, (k 1, p 1, k 1) in next st, k 2, (p 2, k 1) 3 times – 29 sts.

Row 6 (P 1, RT) 3 times, p 5, k 1 tbl, p 5, (RT, p 1) 3 times.

Row 7 (K 1, p 2) 3 times, k 1, [(k 1, p 1, k 1) in next st, p3tog] 2 times, (k 1, p 1, k 1) in next st, k 1, (p 2, k 1) 3 times – 31 sts.

Row 8 (P 1, RT) 3 times, p 13, (RT, p 1) 3 times.

Row 9 (K 1, p 2) 3 times, k 1, [p3tog, (k 1, p 1, k 1) in next st] 2 times, p3tog, k 1, (p 2, k 1) 3 times – 29 sts.

Row 10 (P 1, RT) 3 times, p 11, (RT, p 1) 3 times.

Row 11 (K 1, p 2) 3 times, k 2, p3tog, k 1, p3tog, k 2, (p 2, k 1) 3 times – 25 sts.

Row 12 (P 1, RT) 3 times, p 3, k 1 tbl, p 3, (RT, p 1) 3 times.

Rows 13-156 Repeat Rows 1-12 for 12 times.

Rows 157-167 Repeat Rows 1-11.

Row 168 (P 1, RT) 3 times, p 7, (RT, p 1) 3 times.

Bind off on WS, leaving remaining yarn attached.

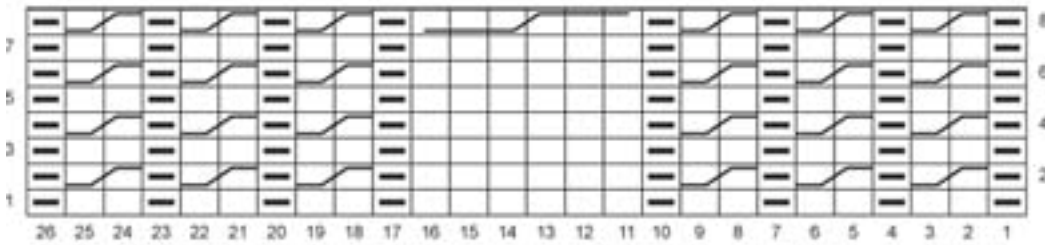
© 1998-2005 Lion Brand Yarn Company, all rights reserved
34 West 15th Street, New York, New York 10011
Call TOLL-FREE 1-800-258-YARN

FINISHING

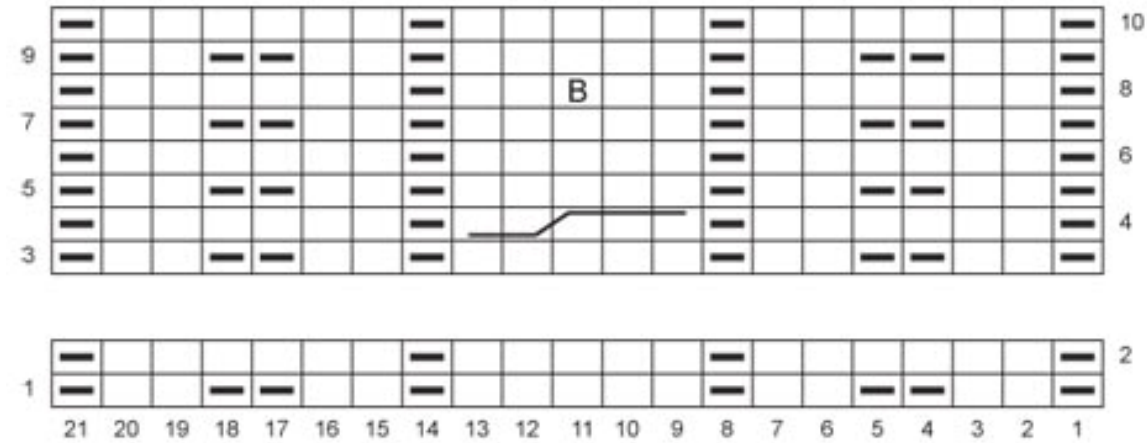
With cast off edges at top, crochet panels tog, picking up the outside strand from each row. Join fullest remaining ball to left bottom corner of piece. Work 1 round sc around entire Throw. Turn, *chain 2, skip 1 st, sc into next st; repeat from * across bottom edge, forming loops to hold fringe. Repeat across top edge.

Fringe Cut strands of yarn 10" [25.5 cm] long. Using 3 strands per fringe, fold in half to form a loop. Insert crochet hook into one of the crocheted spaces along bottom edge of Throw and draw loop through. Draw ends of fringe through loop and tighten. Work evenly across top and bottom edges of Throw.

Panel 1

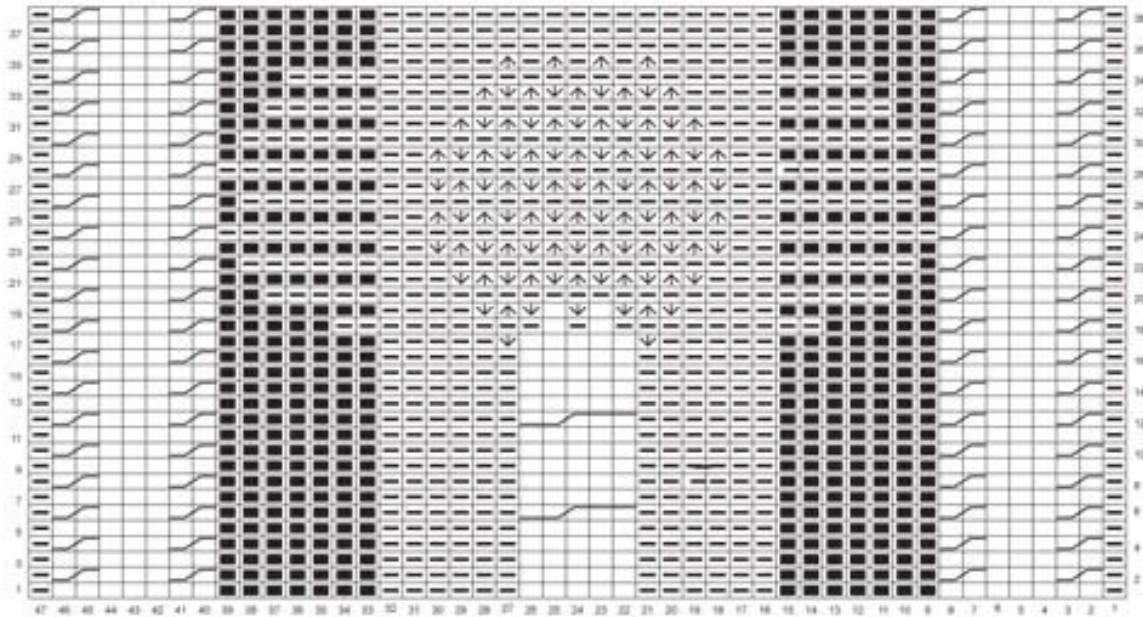


Panel 2



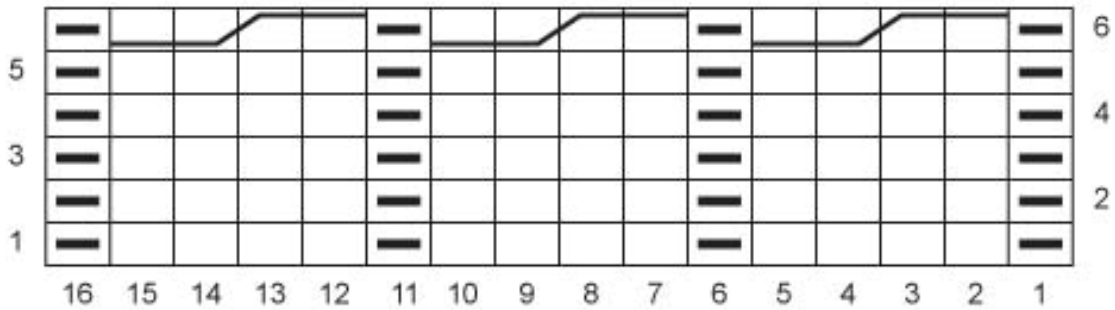
50000-2 panel 2

Panel 3



©2005 Lion Brand Yarn

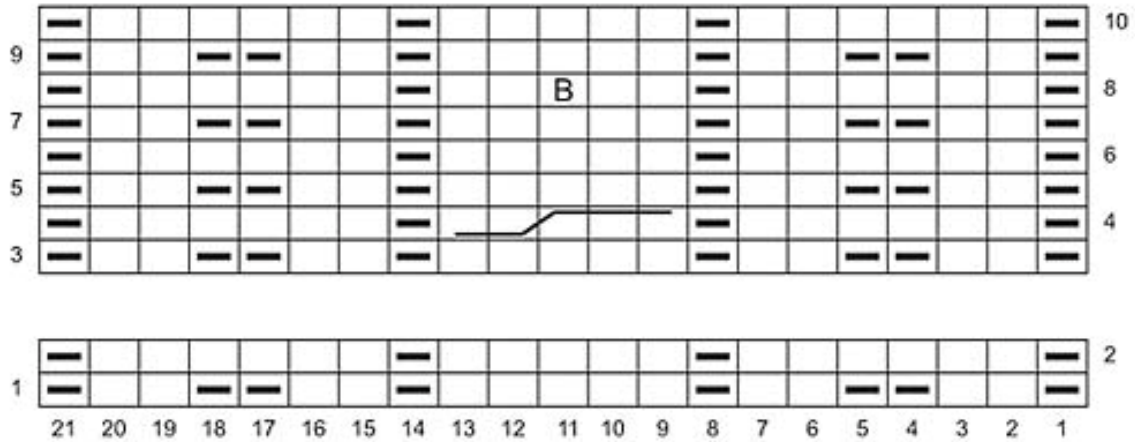
Panel 4











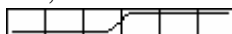
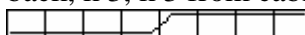
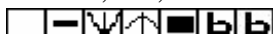
© 1998-2005 Lion Brand Yarn Company, all rights reserved
34 West 15th Street, New York, New York 10011
Call TOLL-FREE 1-800-258-YARN

No pattern or other material may be reproduced – mechanically, electronically or by any other means, including photocopying – without written permission of Lion Brand Yarn Company

Panel 5



Fisherman Charts Legend

-  K on RS, p on WS
-  P on RS, k on WS
-  (K 1, p 1, k 1) into next stitch
-  P3tog
-  No stitch
- 1 K tbl on RS, p tbl on WS
-  **Bobble** (K 1, p 1, k 1, p 1, k 1) in same st, pass 2nd, 3rd, 4th, and 5th sts on right needle over first.
-  **RT (right twist)** K2tog and leave on left needle; with right needle, go between the 2 sts and k the first st again. Drop both sts from left needle.
-  **2/3RC (2 over 3 right cross)** Slip 3 sts to cable needle and hold in back, k 2, k 3 from cable needle.
-  **3/3RC (3 over 3 right cross)** Slip 3 sts to cable needle and hold in back, k 3, k 3 from cable needle.
-  **4/4RC (4 over 4 right cross)** Slip 4 sts to cable needle and hold in back, k 4, k 4 from cable needle.
- 

ABBREVIATIONS

k = knit	sc = single crochet
k2tog = knit 2 together	st(s) = stitch(es)
p = purl	tbl = through back loop
p3tog = purl 3 together	tog = together
RS = right side	WS = wrong side

Wool-Ease Thick & Quick (Article #640) is packaged in 6 oz [170 g]/108 yd [98 m] balls
 Every effort has been made to have the knitting and crochet instructions accurate and complete. We cannot be responsible for variance of individual knitters and crocheters, human errors, or typographical mistakes.

© 1998-2005 Lion Brand Yarn Company, all rights reserved
 34 West 15th Street, New York, New York 10011
 Call TOLL-FREE 1-800-258-YARN

No pattern or other material may be reproduced – mechanically, electronically or by any other means, including photocopying – without written permission of Lion Brand Yarn Company